

Whole building for rent in 22@ (Barcelona)

Ref. AOB2102007

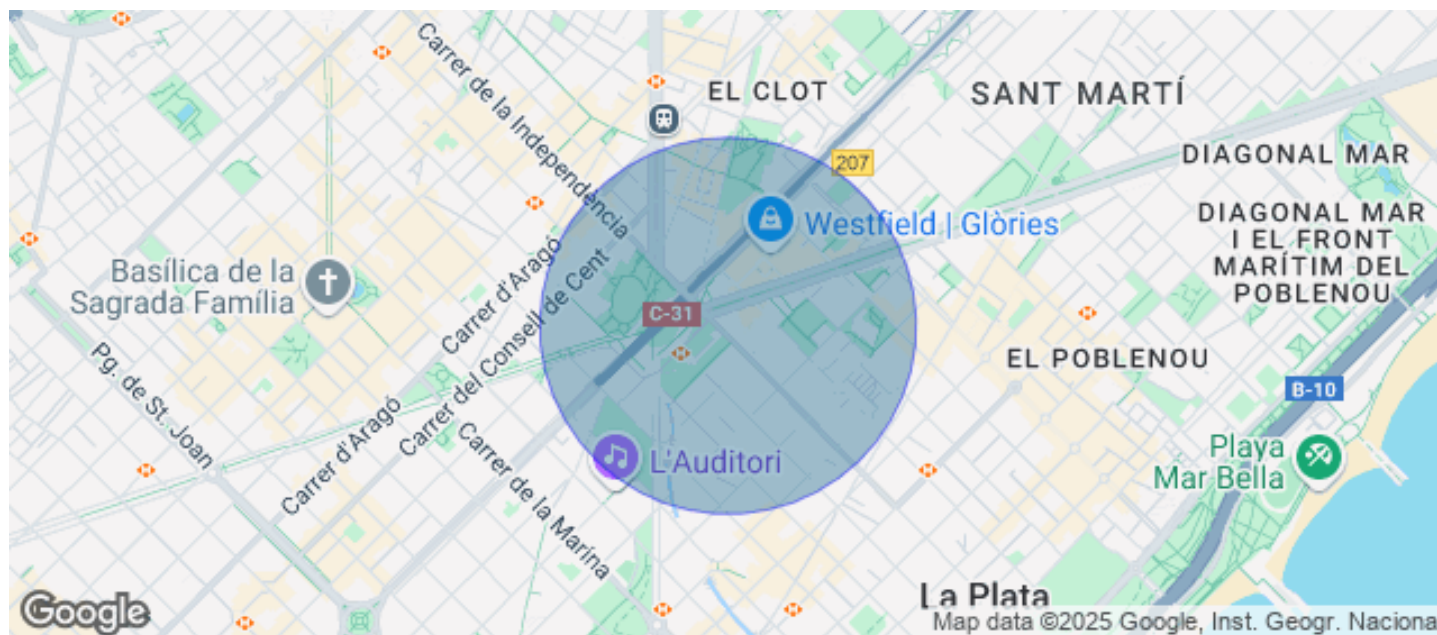
Barcelona / 22@

- ✓ Security
- ✓ Concierge
- ✓ A/C
- ✓ Heating
- ✓ Parking
- ✓ Condition: Very good



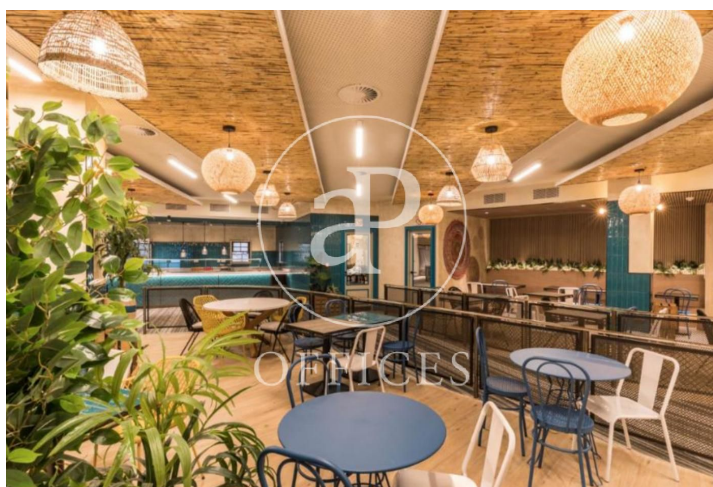
Price from 29,288 € | Surface 1046 m² | 1 Unit

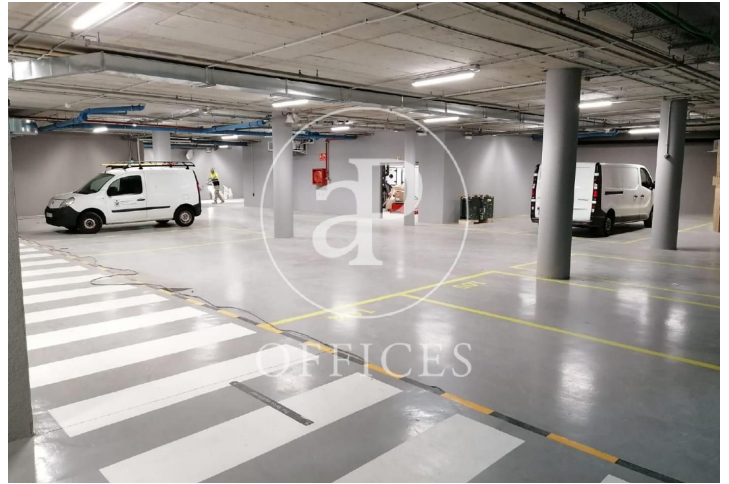
1080 sqm whole building in 22@, Barcelona ., 135 parking spaces, heating and concierge.



Available offices in this building

| Floor | Surface | Price | Price/m² | IBI | Charges | Availability |
|-------|----------|---------|----------|----------|-----------|--------------|
| 18º | 1,046 m² | €29,288 | 28 €/m² | 6,60€/m2 | 6.60 €/m2 | Immediate |





The information about any property is not binding to any offer or contract. Any verbal or written declaration made by aProperties with regards to the value or condition of the property should not be considered accurate or factual. The pictures make reference to some parts of the property at the times that they were taken. The areas, dimensions and distances that are given are approximate and should be checked by the client. The images are computer generated and are just an approximate indication of the real appearance of the property; these may change at any time. The information with regards to the property may also change at any time.

Contact us today for more information or to arrange a viewing

Tel: 93 528 89 08

oficinasbcn@aproproperties.es

www.aoficinas.es