

## Whole building for rent with Terrace in 22@ (Barcelona )

Ref. AOB2206012

Unit 3

Barcelona / 22@

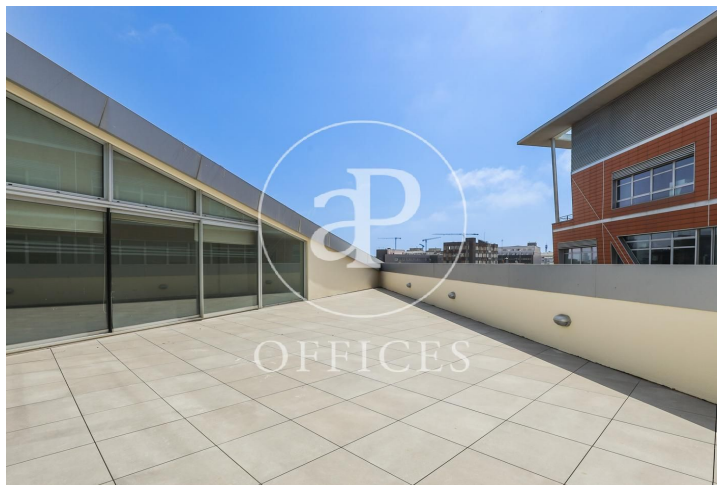
- ✓ Security
- ✓ Concierge
- ✓ A/C
- ✓ Heating
- ✓ Parking
- ✓ Condition: Very good



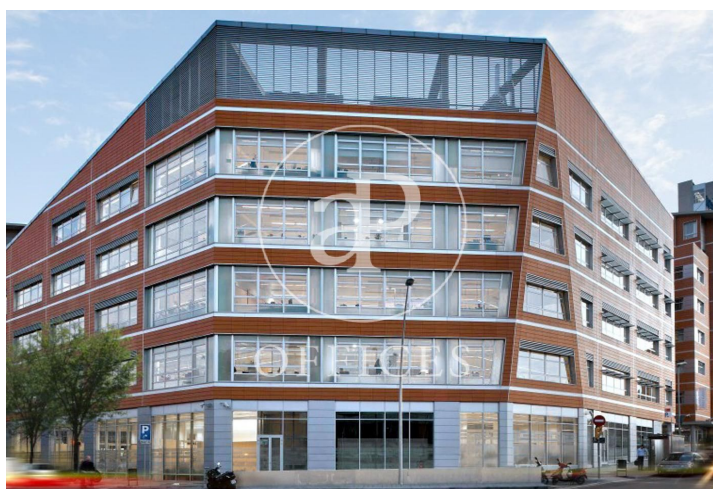
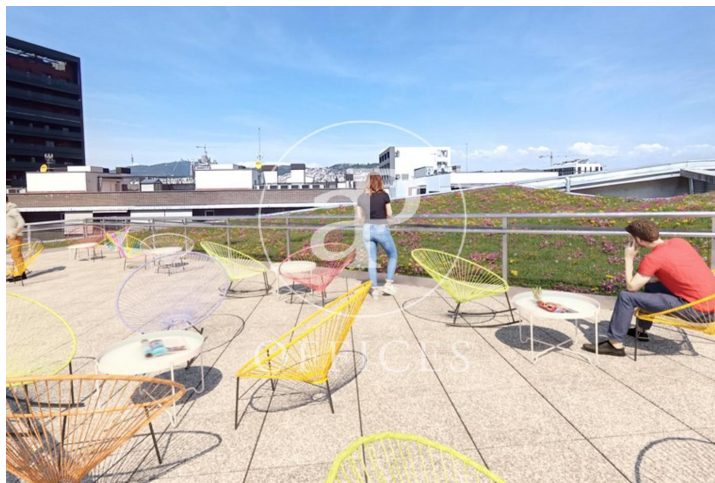
26,840 € | 1 m² | 22,010 €/m² | Charges 4€/m2/mes

Offices for rent in an exclusive office building located in the 22@ district with a total built area of 6.687sqm distributed over ground floor + 4 floors + rooftop terrace. Double height lobby from ground floor to 4th floor. 4 lifts and a freight lift. The interior architecture has a corporate character, open-plan floors with an occupancy ratio of 1/6; 2.80ml clear height to raised floor and suspended ceiling with LED lighting; operable windows; energy efficiency certification 'A'; thermal energy production; centralised BSM control; LEED Gold & WELL silver certificate; abundant natural light; thermal and acoustic comfort. Several units available in the building. Communal expenses and IBI 4€/m2/month. Excellent transport connections: -Metro: L4 Bogatell -Tram: Auditori/teatre T4 -Bus: 6,23, H14, V6, N8, N11 -Car: Ronda del Litoral. -20 minutes from the airport Contact us for more information.









The information about any property is not binding to any offer or contract. Any verbal or written declaration made by aProperties with regards to the value or condition of the property should not be considered accurate or factual. The pictures make reference to some parts of the property at the times that they were taken. The areas, dimensions and distances that are given are approximate and should be checked by the client. The images are computer generated and are just an approximate indication of the real appearance of the property; these may change at any time. The information with regards to the property may also change at any time.

Contact us today for more information or to arrange a viewing

Tel: 93 528 89 08

[oficinasbcn@aproproperties.es](mailto:oficinasbcn@aproproperties.es)

[www.aoficinas.es](http://www.aoficinas.es)