

Office with terrace for rent in Eixample Esquerra (Barcelona city)

Ref. AOB2102021

Barcelona / Eixample Esquerra

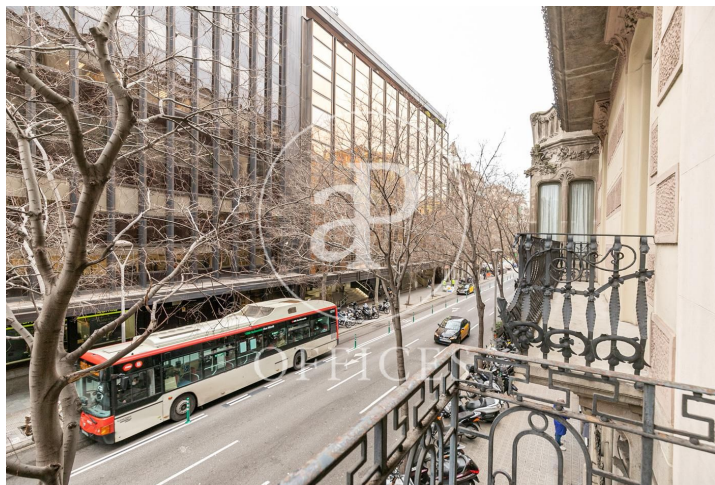
- ✓ Concierge
- ✓ A/C
- ✓ Heating
- ✓ Condition: Good
- ✓ Terrace

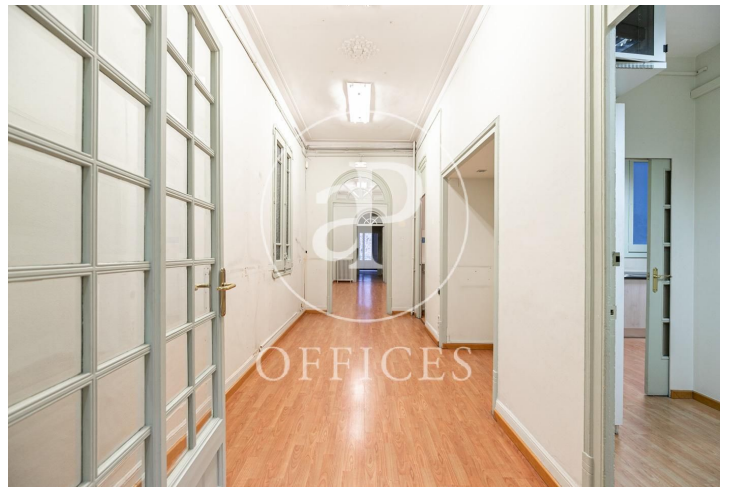


3,200 € | 250 m² + 50 m² terrace

250sqm office rental in the business epicenter, on Avinguda Diagonal with Aribau, in a classic building with concierge and elevator. With plenty of natural light from two winds, it has a 50sqm terrace and three wonderful balconies from which you can see the Tibidabo, parquet floors and high ceilings, with very good finishes. It has a kitchen and bathrooms inside the office, The offices have eight offices separated by partitions, with a full bathroom and a toilet inside and a small warehouse. It also has air conditioning for Split, with cold and heat pump, installed security system only needs to be reactivated. Public transport: Metro, Diagonal (L5 - L3). Train, Provença (L6 – L7-S5-S5S-S1-S2). Bus (6-7-33-34-H8).









The information about any property is not binding to any offer or contract. Any verbal or written declaration made by aProperties with regards to the value or condition of the property should not be considered accurate or factual. The pictures make reference to some parts of the property at the times that they were taken. The areas, dimensions and distances that are given are approximate and should be checked by the client. The images are computer generated and are just an approximate indication of the real appearance of the property; these may change at any time. The information with regards to the property may also change at any time.

Contact us today for more information or to arrange a viewing

Tel: 93 528 89 08

oficinasbcn@aproproperties.es

www.aoficinas.es