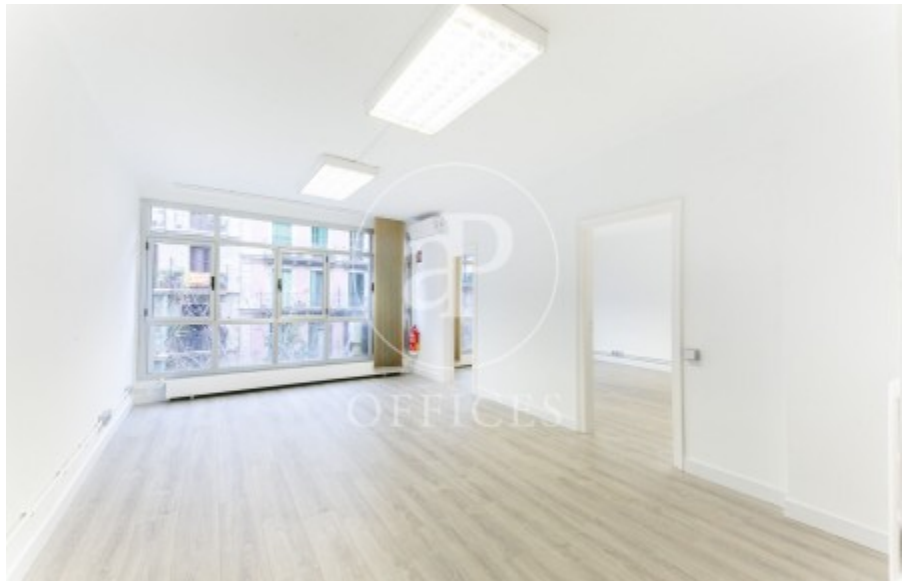


## Office for rent in C/ Rosellón

Ref. AOB2403008

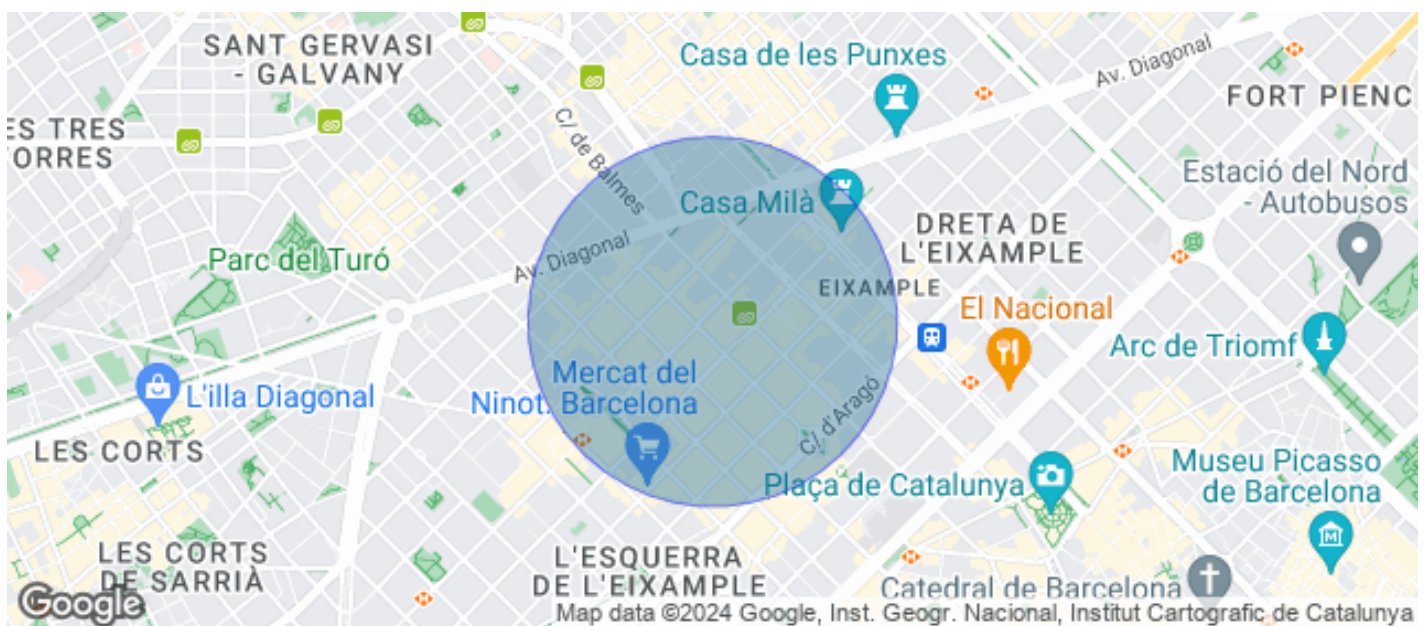
### Barcelona / Eixample Esquerra

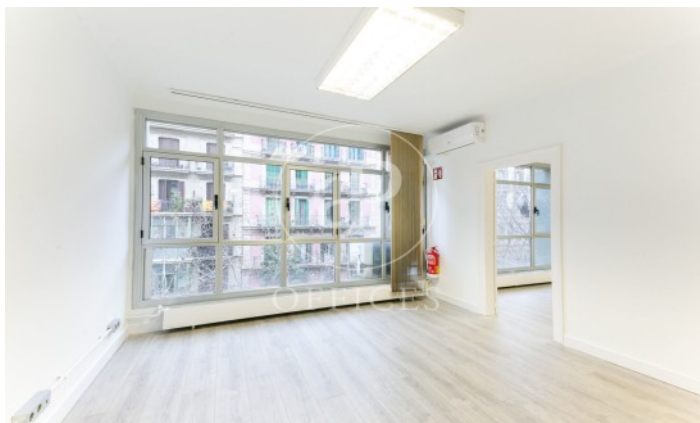
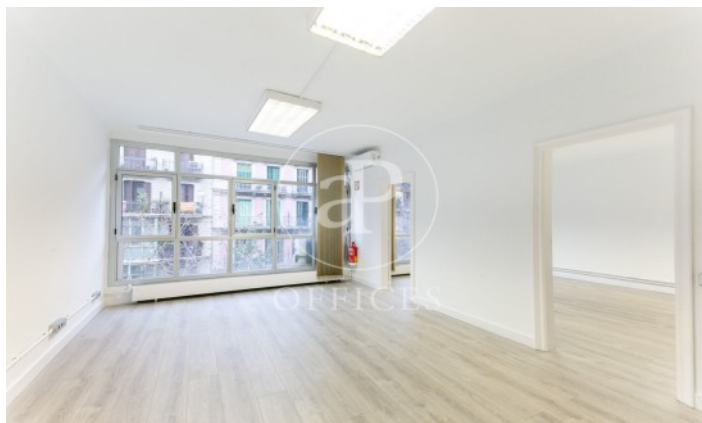
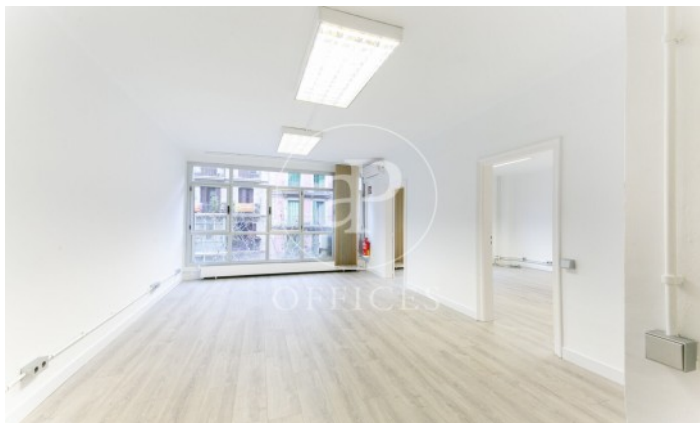
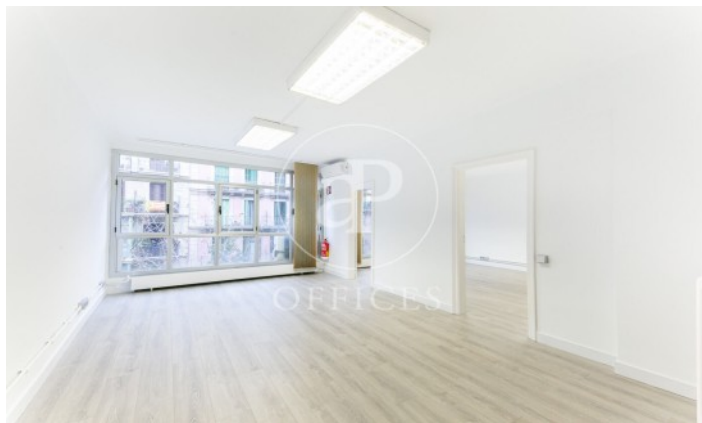
- ✓ Concierge
- ✓ A/C
- ✓ Heating
- ✓ Condition: Good

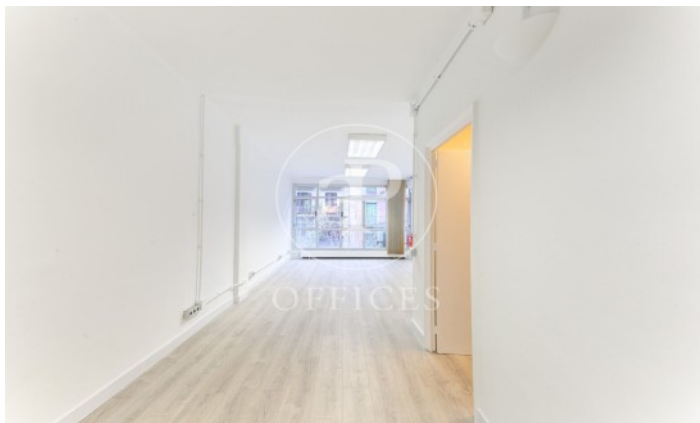
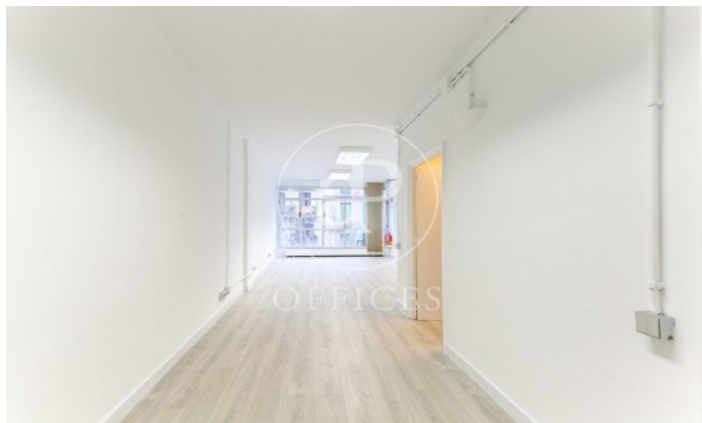


1,150 € | 60 m²

Office for rent of 60 m2 distributed in an open-plan room for work use and an adjoining room for meetings or individual office as well as a toilet inside the office. Both spaces are very bright. It has split air conditioning and perimeter electrical installation. Community fees and property tax apart from 50€/month. It is located in an exclusive office building with concierge service during business hours and a lift. The building is located in Rosselló next to Balmes, in an area with a multitude of services and good public transport connections. Metro: Diagonal (L3, L5). Bus: 54, 67, 33, 34, 6, H8. FGC: Provenza. Do not hesitate to contact us for more information and to arrange a visit.











The information about any property is not binding to any offer or contract. Any verbal or written declaration made by aProperties with regards to the value or condition of the property should not be considered accurate or factual. The pictures make reference to some parts of the property at the times that they were taken. The areas, dimensions and distances that are given are approximate and should be checked by the client. The images are computer generated and are just an approximate indication of the real appearance of the property; these may change at any time. The information with regards to the property may also change at any time.

Contact us today for more information or to arrange a viewing

Tel: 93 528 89 08

[oficinasbcn@aproproperties.es](mailto:oficinasbcn@aproproperties.es)

[www.aoficinas.es](http://www.aoficinas.es)