

Office for rent in Les Corts (Barcelona city)

Ref. AOB2010029

Barcelona / Les Corts

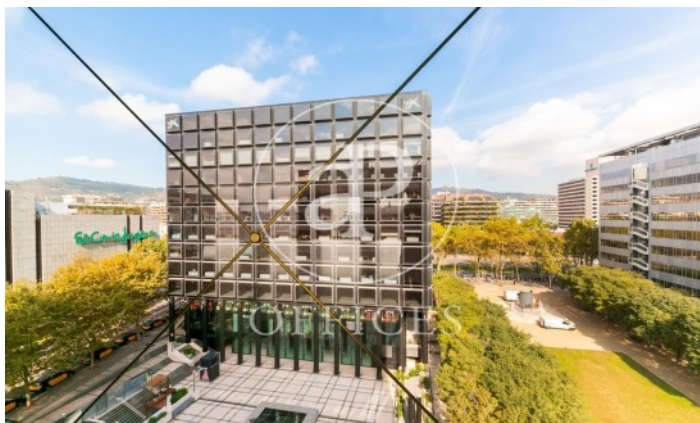
- ✓ Security
- ✓ Concierge
- ✓ A/C
- ✓ Heating

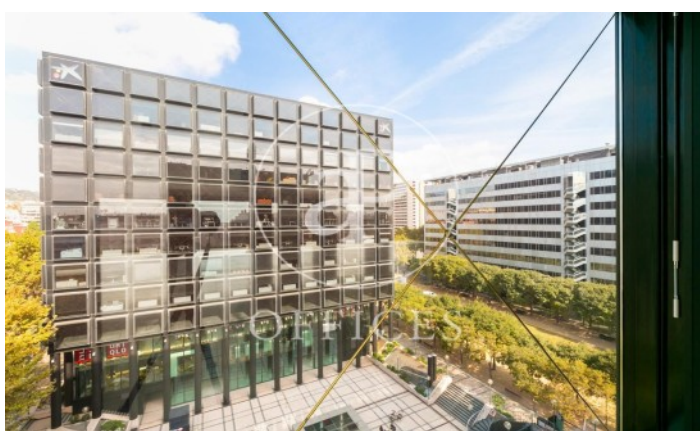
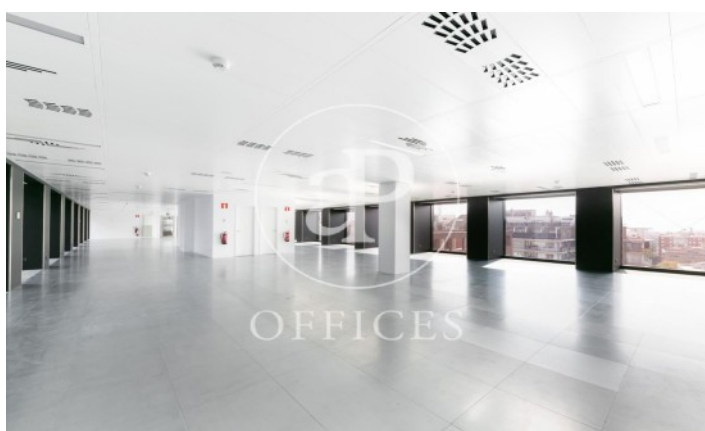
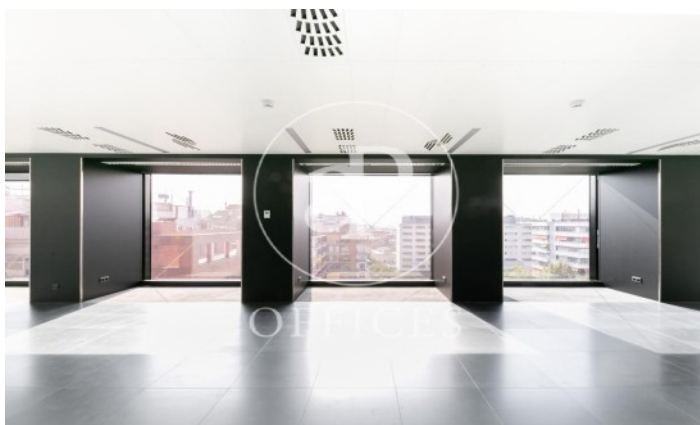
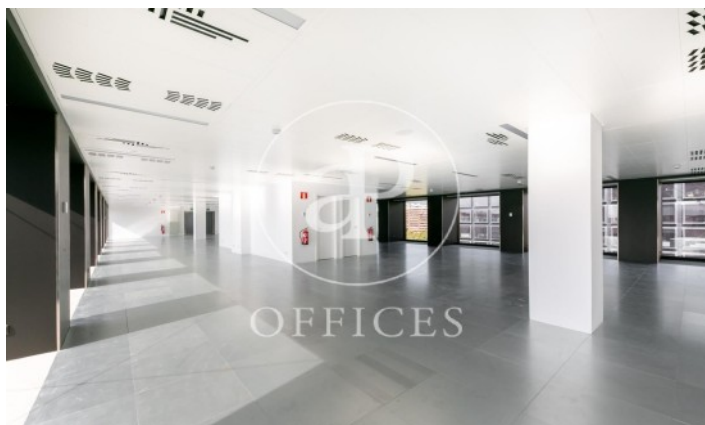


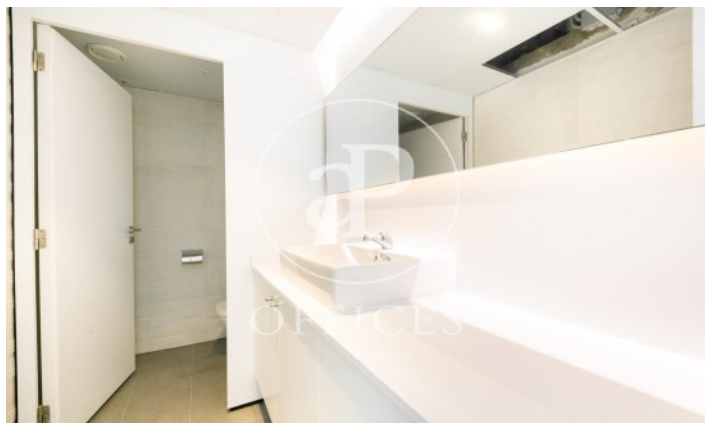
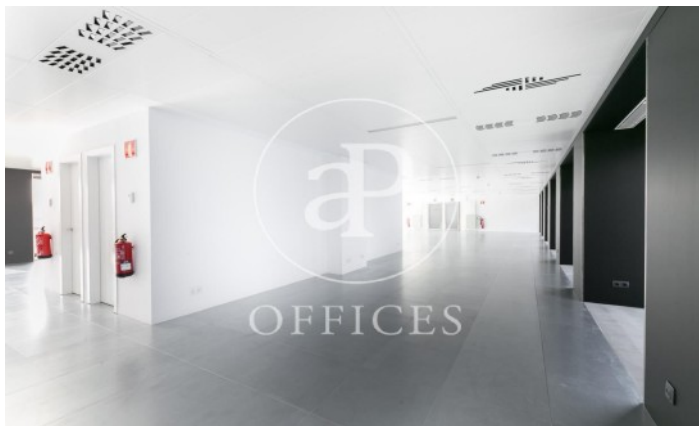
12,400 € | 496 m²

Available office of 496sqm with open plan distribution, and a block of 4 toilets inside. The office has technical flooring and air conditioning ducts. It is very bright thanks to the large windows on the façade with beautiful views of the sea and mountains. Community and IBI expenses not included in the monthly rent: € 5.20 / m2 = € 2,579.20 / month. Ideal to implement a prestigious business in a building with a great corporate image. The building has a concierge, 24h security, two lifts and the possibility of parking in the same building. It has high quality materials and Breeam Gold energy certification. The building is located in one of the main financial areas of the city, surrounded by all kinds of services and very good communications by public transport. Metro: L3 (Maria Cristina). Bus: 6 -7-16 -33 -34- 59 -63 -66- 67- 70- 72- 75-78-L12-L14-L79-L97-N12. Tram: T1, T2 and T3. Do not hesitate to visit our website to assess other options: <http://www.aoficinas.es>









The information about any property is not binding to any offer or contract. Any verbal or written declaration made by aProperties with regards to the value or condition of the property should not be considered accurate or factual. The pictures make reference to some parts of the property at the times that they were taken. The areas, dimensions and distances that are given are approximate and should be checked by the client. The images are computer generated and are just an approximate indication of the real appearance of the property; these may change at any time. The information with regards to the property may also change at any time.

Contact us today for more information or to arrange a viewing

Tel: 93 528 89 08

oficinasbcn@aproproperties.es

www.aoficinas.es