

Building for rent in 22@

Ref. AOB2408007

Unit bj

Barcelona / Poble Nou

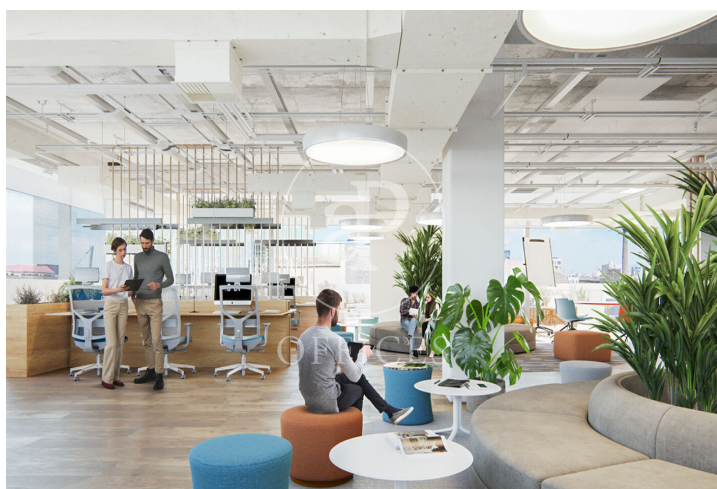
- ✓ Security
- ✓ Concierge
- ✓ A/C
- ✓ Heating
- ✓ Parking
- ✓ Condition: Good
- ✓ Terrace

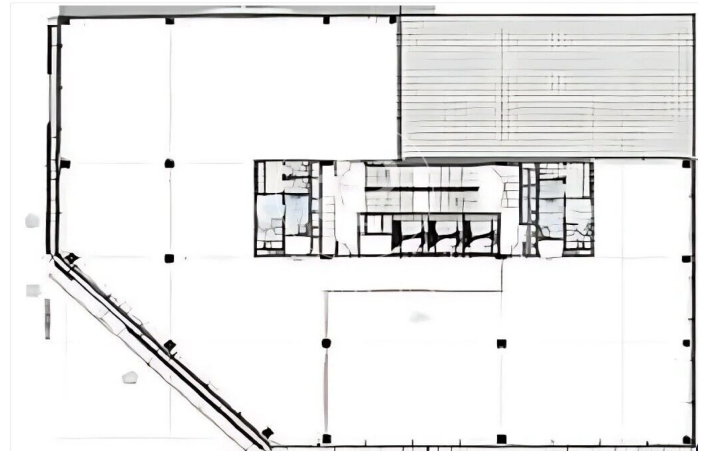


18,240 € | 912 m² | 20 €/m² | IBI Incluido en comunidad | Charges a convenir

Recently renovated office building in the heart of 22@. It has a ground floor + 5 floors above ground level, with a beautiful terrace of more than 1,000 m² with all kinds of services and amenities. The building is awarded LEED-Platinum and Well-Gold certificates, as well as a Wired Scored silver certificate. Open-plan floors with natural light, fabulous views of the Ciutat Vella, and south orientation, raised floors with false ceilings, and LED lighting. Cold and hot heating system, individualized by floor, fire protection system, 3 elevators, and corporate parking. With an excellent location via Meridiana and Avda. Diagonal. Metro Line 4 and buses such as: 6, 136, B20, B25, V23, and Bicing lane. Availability: Ground Floor: 912 m² 1st Floor with terrace: 1,204.28 m² 3rd Floor: 1,204.28 m² 5th Floor: 725 m² Don't forget to visit our website to explore other options? <https://www.aoficinas.es/>









The information about any property is not binding to any offer or contract. Any verbal or written declaration made by aProperties with regards to the value or condition of the property should not be considered accurate or factual. The pictures make reference to some parts of the property at the times that they were taken. The areas, dimensions and distances that are given are approximate and should be checked by the client. The images are computer generated and are just an approximate indication of the real appearance of the property; these may change at any time. The information with regards to the property may also change at any time.

Contact us today for more information or to arrange a viewing

Tel: 93 528 89 08

oficinasbcn@aproproperties.es

www.aoficinas.es