

Office for rent in Sant Gervasi

Ref. AOB2603014

Barcelona / Sarrià-St. Gervasi

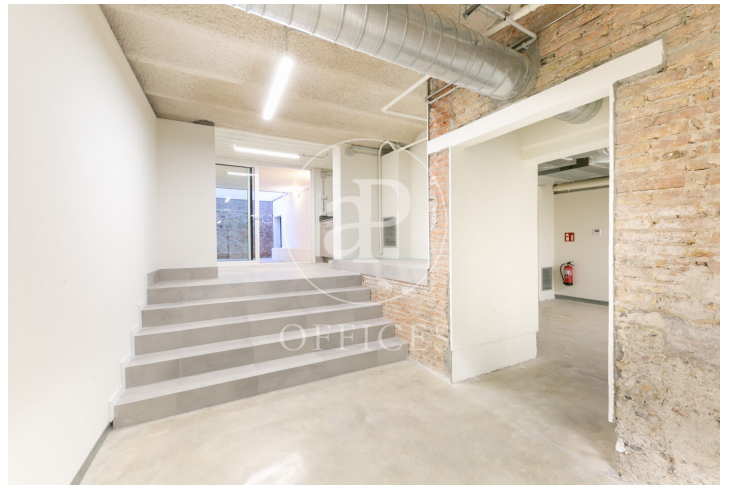
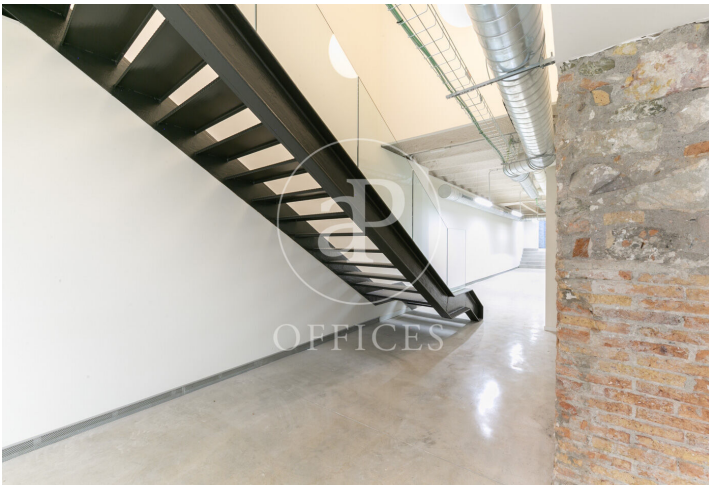
- ✓ A/C
- ✓ Heating
- ✓ Condition: Good
- ✓ Terrace



2,900 € | 429 m<sup>2</sup> + 7 m<sup>2</sup> terrace

Commercial premises for rent of 429 m<sup>2</sup> distributed over two floors. The entrance is independent at street level with a space of 65 m<sup>2</sup> and two restrooms, one of them adapted for people with reduced mobility. This area is ideal as a reception space. The basement floor has 357 m<sup>2</sup> with an open-plan layout, 1 office kitchen and a pleasant 7 m<sup>2</sup> terrace. The premises have been recently renovated and feature ducted air conditioning and direct elevator access to the basement floor. Community expenses not included: €250/month. Available from May. Ideal for establishing any commercial activity. It is located in the Sant Gervasi district, very close to Plaza Molina, a very commercial area with all kinds of services and excellent public transport connections. Metro: L7 (Plaza Molina). Bus: 27, D40, V15. FGC: S5 and S6 (Sant Gervasi). Do not hesitate to contact us for further information and to arrange a viewing.









The information about any property is not binding to any offer or contract. Any verbal or written declaration made by aProperties with regards to the value or condition of the property should not be considered accurate or factual. The pictures make reference to some parts of the property at the times that they were taken. The areas, dimensions and distances that are given are approximate and should be checked by the client. The images are computer generated and are just an approximate indication of the real appearance of the property; these may change at any time. The information with regards to the property may also change at any time.

Contact us today for more information or to arrange a viewing

Tel: 93 528 89 08

[oficinasbcn@aproproperties.es](mailto:oficinasbcn@aproproperties.es)

[www.aoficinas.es](http://www.aoficinas.es)