

Office for sale in Sarria-St. Gervasi (Barcelona city)

Ref. VOB2007001

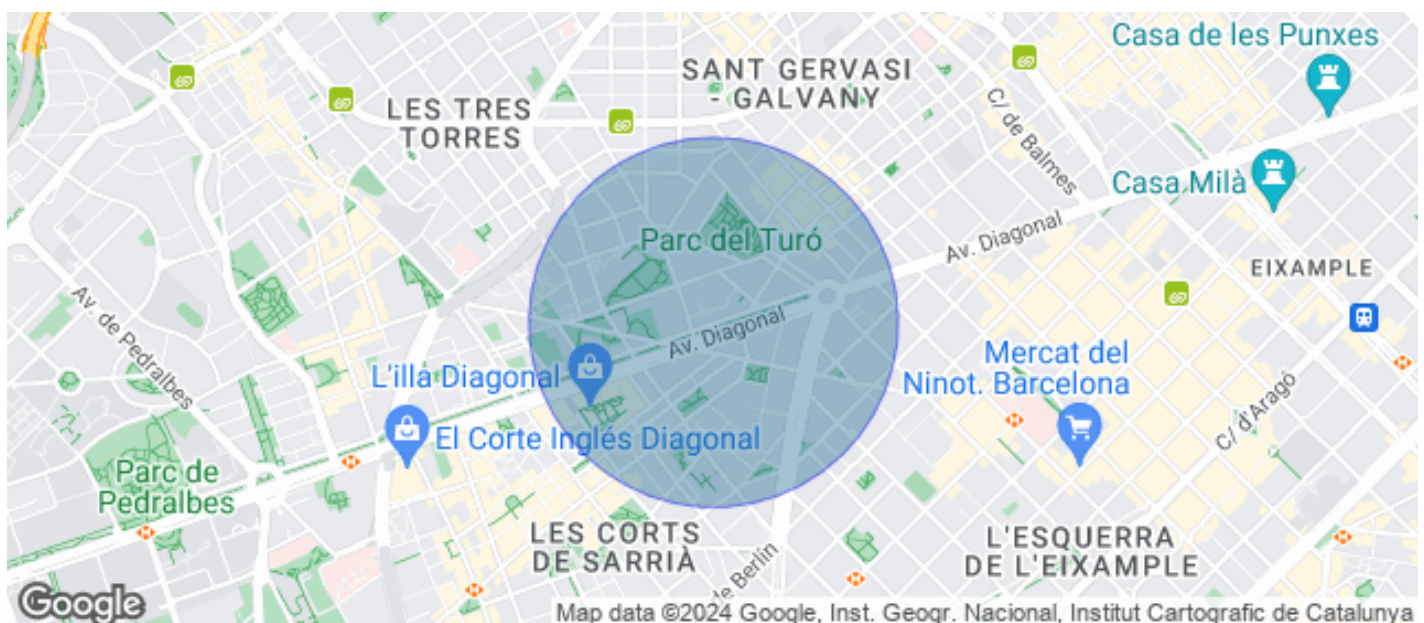
Mixto - Divided by screens distribution
Barcelona / Sarria-St. Gervasi

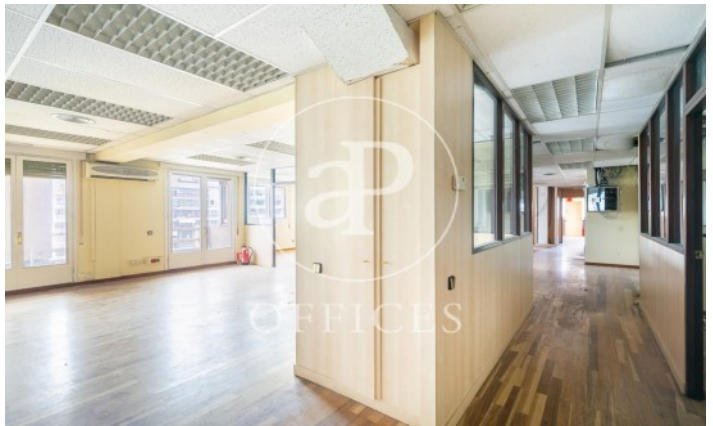
- ✓ Wooden floor
- ✓ Kitchen with office
- ✓ Data network
- ✓ Concierge
- ✓ Security door
- ✓ Access control
- ✓ A/C
- ✓ Heating
- ✓ Parking
- ✓ Fire detectors
- ✓ Condition: For renovation

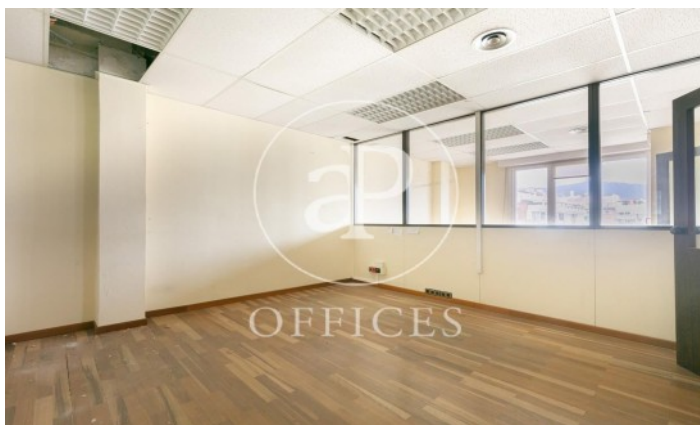


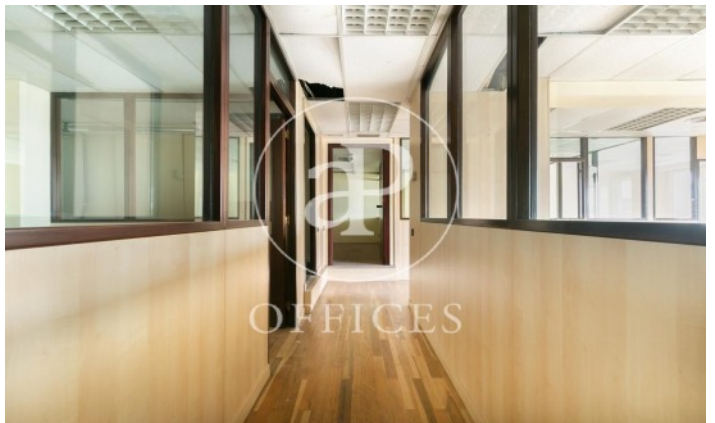
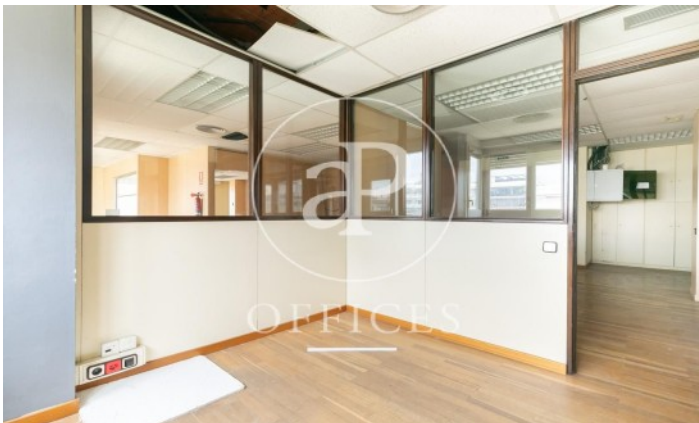
1,300,000 € | 340 m² | 3823.53 €/m²

It is a very bright 340sqm office distributed with 7 rooms divided by partitions, which provides greater flexibility to reorganize the space and obtain the maximum performance from the space and its possibilities. It also has an exit to a balcony to a very quiet residential area, a rack area and space for an office kitchen. The building consists of two elevators, concierge service, parking spaces available in the building. It is located in the main business hub of the city on Avinguda Diagonal next to Plaza Francesc Macià and excellent communications by public transport. Metro: L3, Bus: 6,7,33,34,63,67, V9. Tram: T1, T2, T3. AGENCY FEES IN CHARGE OF THE BUYER Do not hesitate to contact us to arrange a visit. Visit our website to assess other options: <http://www.aproperties.es>









The information about any property is not binding to any offer or contract. Any verbal or written declaration made by aProperties with regards to the value or condition of the property should not be considered accurate or factual. The pictures make reference to some parts of the property at the times that they were taken. The areas, dimensions and distances that are given are approximate and should be checked by the client. The images are computer generated and are just an approximate indication of the real appearance of the property; these may change at any time. The information with regards to the property may also change at any time.

Contact us today for more information or to arrange a viewing

Tel: 93 528 89 08

oficinasbcn@aproproperties.es

www.aoficinas.es