

## Whole building for rent with Terrace in Madrid

Ref. AOM2103020

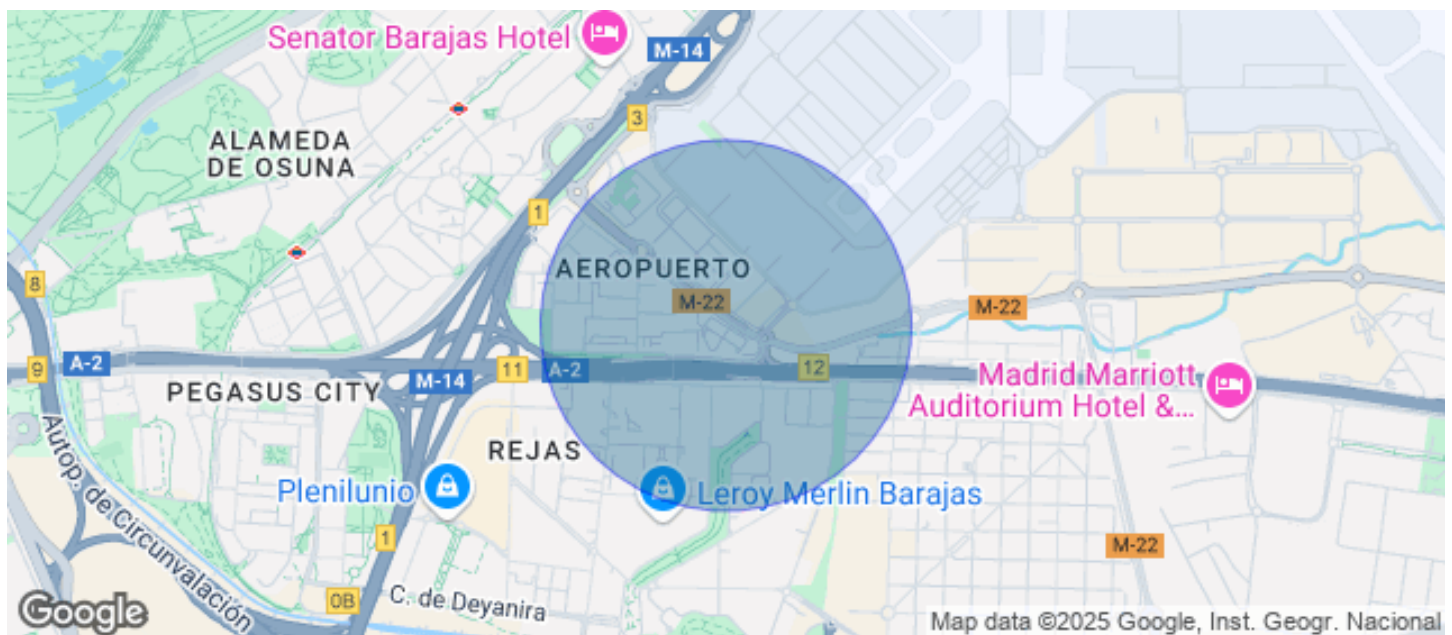
### Madrid

- ✓ Security
- ✓ Concierge
- ✓ A/C
- ✓ Heating
- ✓ Parking
- ✓ Condition: Good
- ✓ Terrace



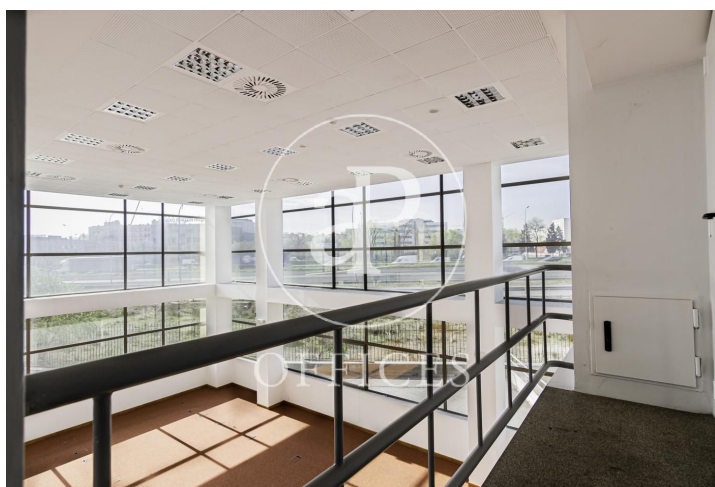
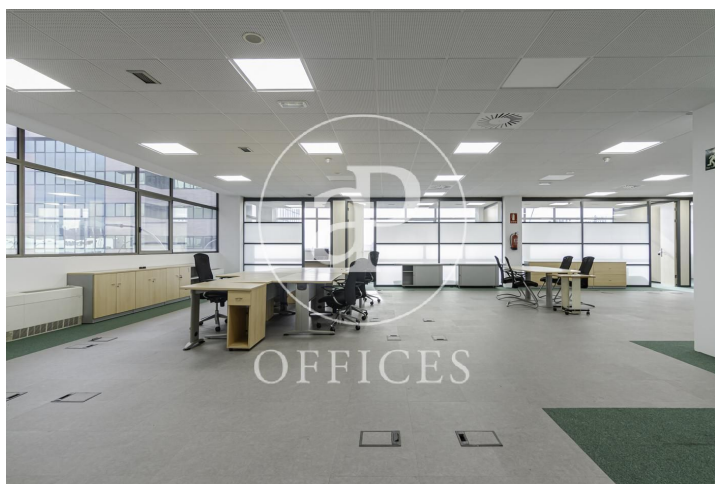
Price from 2,926 € | Surface 325 m² - 685 m² | 5 Units

685 sqm whole building with Terrace in Madrid ., parking space, heating and concierge.



Available offices in this building

Floor	Surface	Price	Price/m <sup>2</sup>	Charges	Availability
Bajo	556 m <sup>2</sup>	€5,011	9 €/m <sup>2</sup>	1670.74	Immediate
1°	325 m <sup>2</sup>	€2,926	9 €/m <sup>2</sup>	975.6	Immediate
2°	685 m <sup>2</sup>	€6,166	9 €/m <sup>2</sup>	2055.66	Immediate
3°	685 m <sup>2</sup>	€6,166	9 €/m <sup>2</sup>	2055.66	Immediate
3°	685 m <sup>2</sup>	€6,166	9 €/m <sup>2</sup>	2055.66	Immediate









The information about any property is not binding to any offer or contract. Any verbal or written declaration made by aProperties with regards to the value or condition of the property should not be considered accurate or factual. The pictures make reference to some parts of the property at the times that they were taken. The areas, dimensions and distances that are given are approximate and should be checked by the client. The images are computer generated and are just an approximate indication of the real appearance of the property; these may change at any time. The information with regards to the property may also change at any time.

---

Contact us today for more information or to arrange a viewing

Tel: 91 800 54 65

[oficinasmad@aproproperties.es](mailto:oficinasmad@aproproperties.es)

[www.aoficinas.es](http://www.aoficinas.es)