

for rent in Madrid city

Ref. AOM2007015

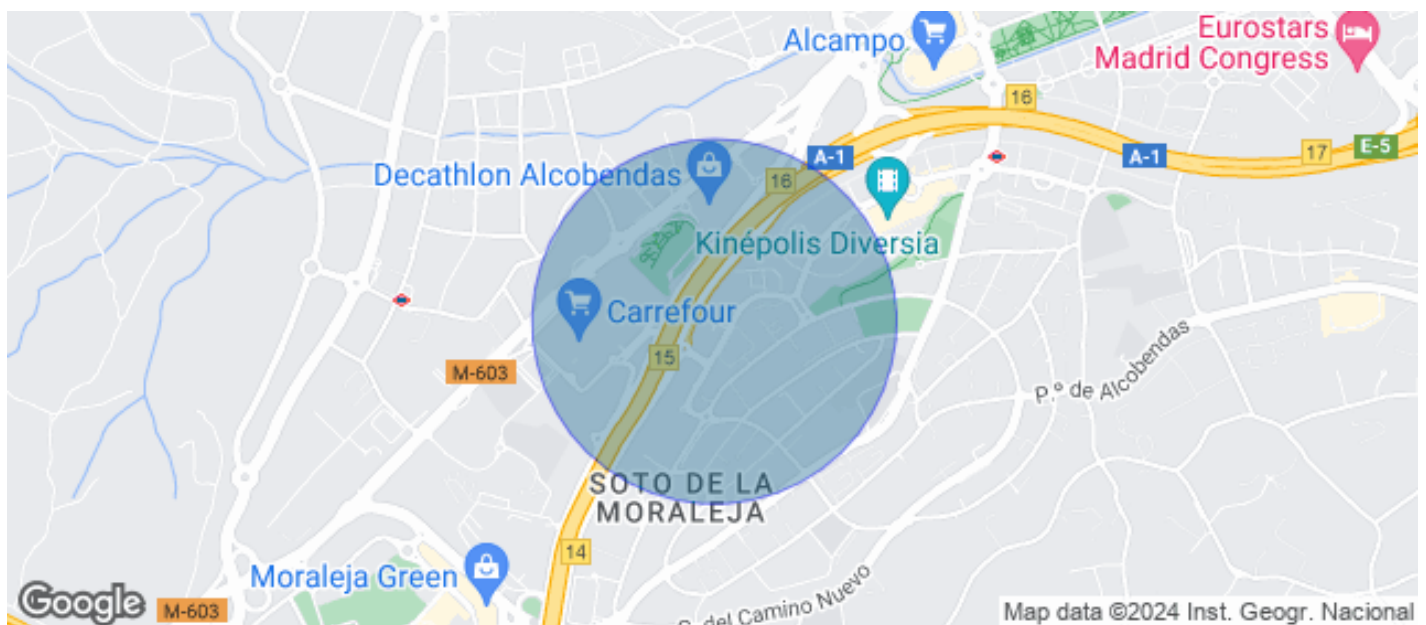
Madrid

- ✓ Security
- ✓ A/C
- ✓ Heating
- ✓ Parking



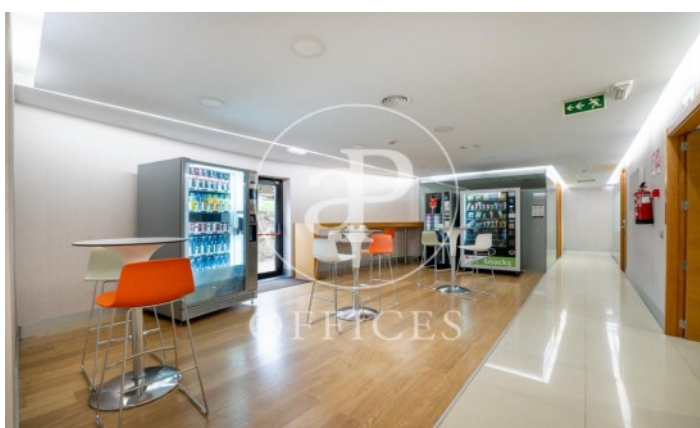
Price upon request | 2,000 m²

Surface area of 2,000 sqm distributed over three floors of a representative building in Soto de la Moraleja. Capacity for several workstations, up to 190. The spaces are distributed in coworking area, phone booths, meeting & coffee areas, meeting rooms, individual offices and offices for up to 60 people. A totally personalized service is offered in an environment designed for business and professional activities to be carried out at the highest level. In addition, the centre has surveillance with access control and the possibility of its own car park in the same building.









The information about any property is not binding to any offer or contract. Any verbal or written declaration made by aProperties with regards to the value or condition of the property should not be considered accurate or factual. The pictures make reference to some parts of the property at the times that they were taken. The areas, dimensions and distances that are given are approximate and should be checked by the client. The images are computer generated and are just an approximate indication of the real appearance of the property; these may change at any time. The information with regards to the property may also change at any time.

Contact us today for more information or to arrange a viewing

Tel: 91 800 54 65

oficinasmad@aproproperties.es

www.aoficinas.es