

Office for rent in Avenida Partenón

Ref. AOM2504012

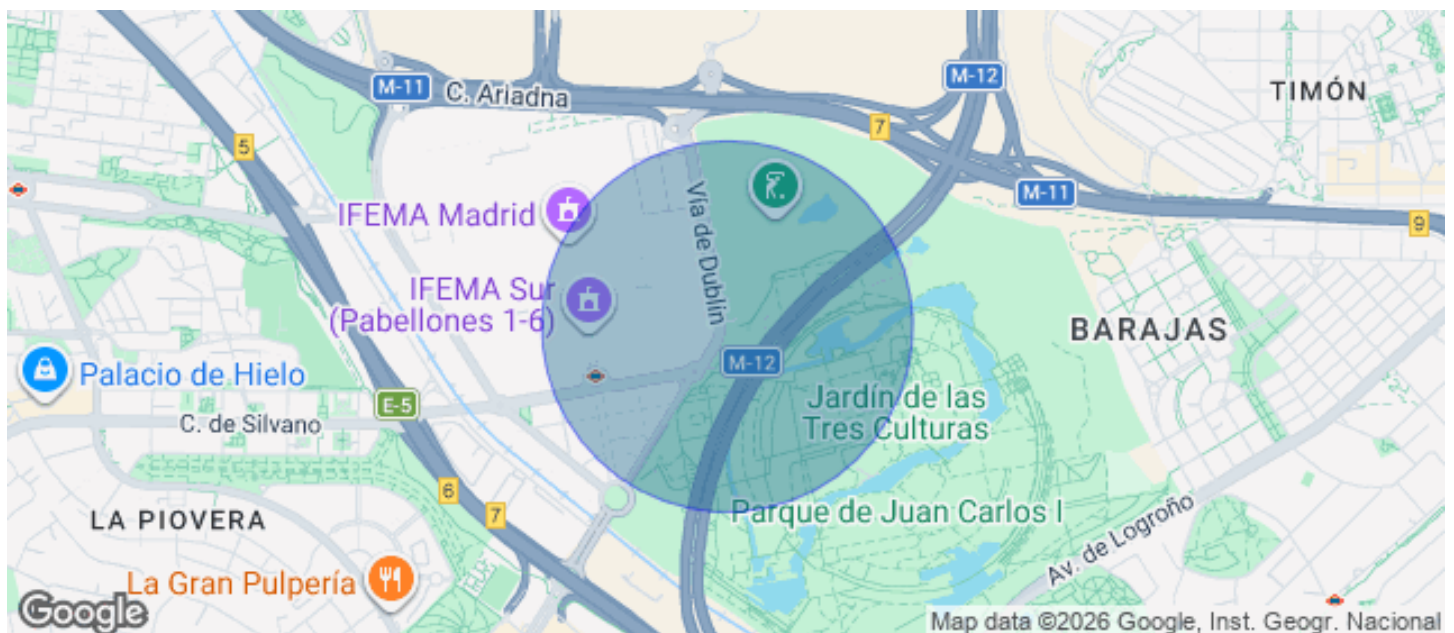
Madrid / Conde Orgaz

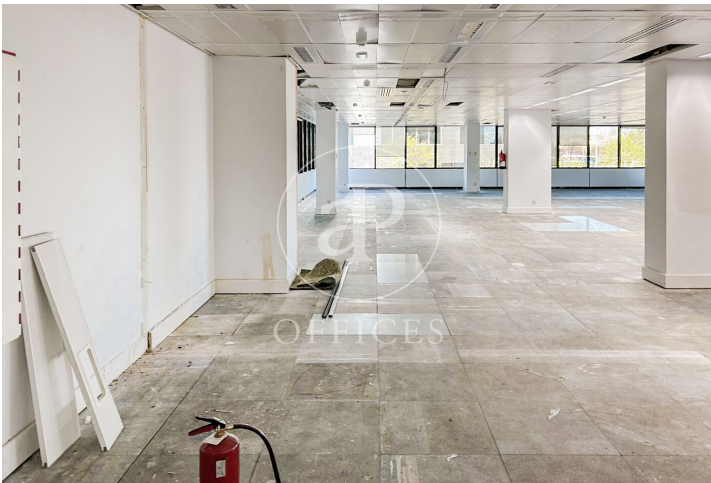
- ✓ Security
- ✓ Concierge
- ✓ A/C
- ✓ Heating
- ✓ Parking
- ✓ Condition: Very good



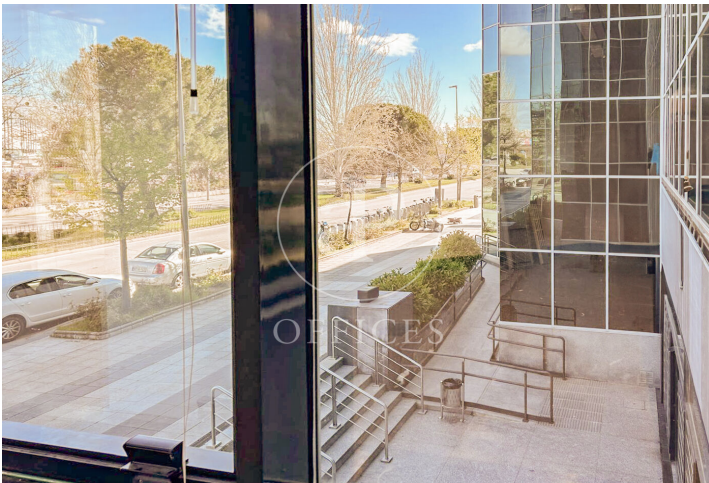
27,396 € | 1,522 m²

aProperties presents Modern office of 1.522 m2 located in an exclusive office building in IFEMA and in front of the Juan Carlos I Park. Fantastic access by public transport (Metro and buses), as well as by car with access from the M-40, M-11 and M-12, Representative building with central glass atrium. Mix of services in the immediate area. **SERVICES IN THE BUILDING** Concierge and security service 365x24 h. Access control and CCTV. Restaurant / Cafeteria. Butler's locker. Lifts with high energy efficiency. Common expenses of 5.859 €/month not included in the rent. Air conditioning included in Common Expenses. Can you imagine working here?









The information about any property is not binding to any offer or contract. Any verbal or written declaration made by aProperties with regards to the value or condition of the property should not be considered accurate or factual. The pictures make reference to some parts of the property at the times that they were taken. The areas, dimensions and distances that are given are approximate and should be checked by the client. The images are computer generated and are just an approximate indication of the real appearance of the property; these may change at any time. The information with regards to the property may also change at any time.

Contact us today for more information or to arrange a viewing

Tel: 91 800 54 65

oficinasmad@aproproperties.es

www.aoficinas.es