

Whole building for rent in Cuzco (Madrid city)

Ref. AOM2010035

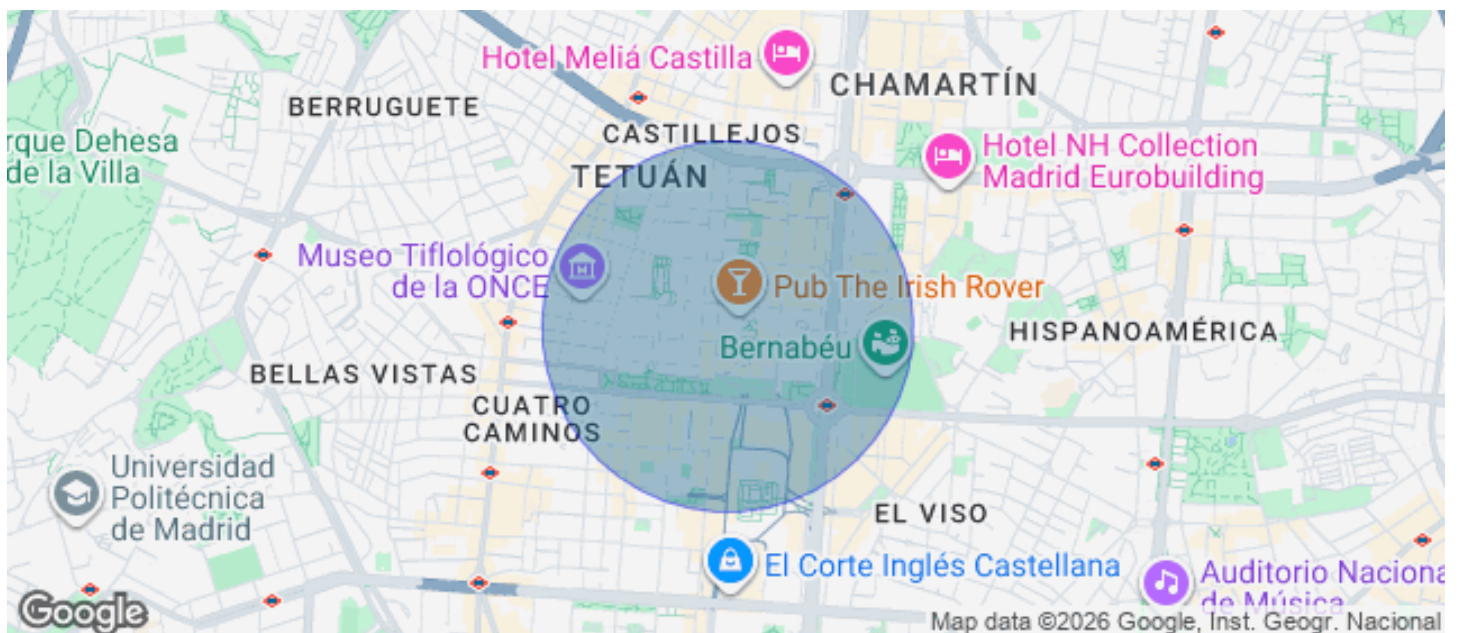
Madrid / Cuatro Caminos

- ✓ Concierge
- ✓ A/C
- ✓ Heating
- ✓ Parking
- ✓ Condition: Good



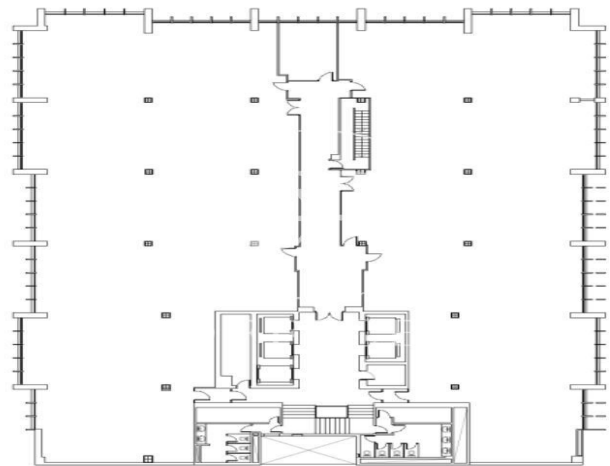
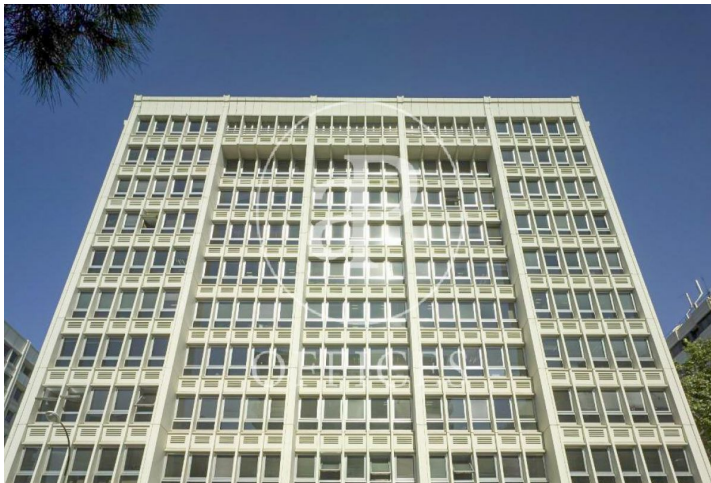
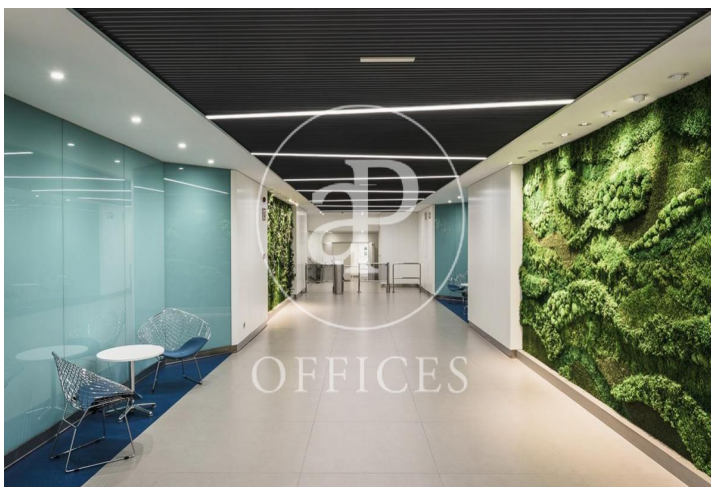
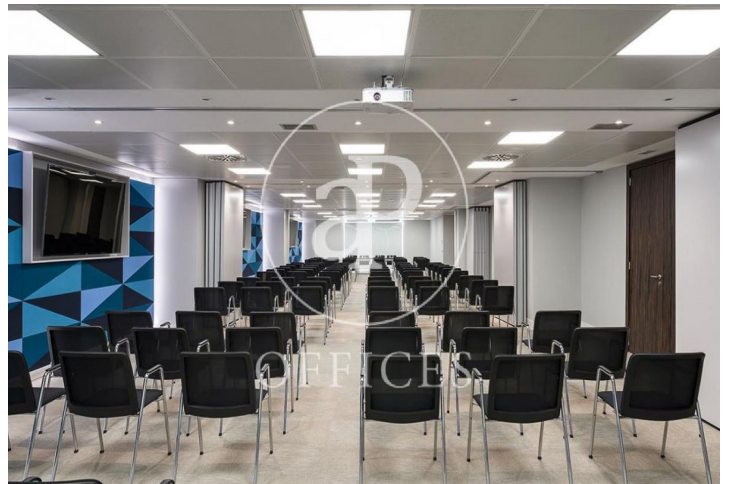
Price from 7,550 € | Surface 290 m<sup>2</sup> | 1 Unit

Exclusive office building located in the most emblematic point of Azca, the financial heart of Madrid, with a wide range of commercial, restaurant and leisure services in the surroundings. It has 11 modular floors, high performance LED lights and hot and cold air conditioning. It has 24-hour security and maintenance, a meeting center, paddle tennis club, physiotherapy clinic and public parking. In addition, the building is adapted for people with disabilities. The area has one of the most complete and extensive offers of services in Madrid: hotels, restaurants, shopping centers, financial institutions, schools, gyms, pharmacies, wellness centers and prestigious stores.



Available offices in this building

<b>Floor</b>	<b>Surface</b>	<b>Price</b>	<b>Price/m<sup>2</sup></b>	<b>Charges</b>	<b>Availability</b>
6° B	290 m <sup>2</sup>	€7,550	26 €/m <sup>2</sup>	4,62 €/m2/mes	Immediate



The information about any property is not binding to any offer or contract. Any verbal or written declaration made by aProperties with regards to the value or condition of the property should not be considered accurate or factual. The pictures make reference to some parts of the property at the times that they were taken. The areas, dimensions and distances that are given are approximate and should be checked by the client. The images are computer generated and are just an approximate indication of the real appearance of the property; these may change at any time. The information with regards to the property may also change at any time.

Contact us today for more information or to arrange a viewing

Tel: 91 800 54 65

[oficinasmad@aproproperties.es](mailto:oficinasmad@aproproperties.es)

[www.aoficinas.es](http://www.aoficinas.es)