

Office for sale in Benigno Soto

Ref. VOM2206001

Madrid / El Viso

- ✓ A/C
- ✓ Heating
- ✓ Parking
- ✓ Condition: Good

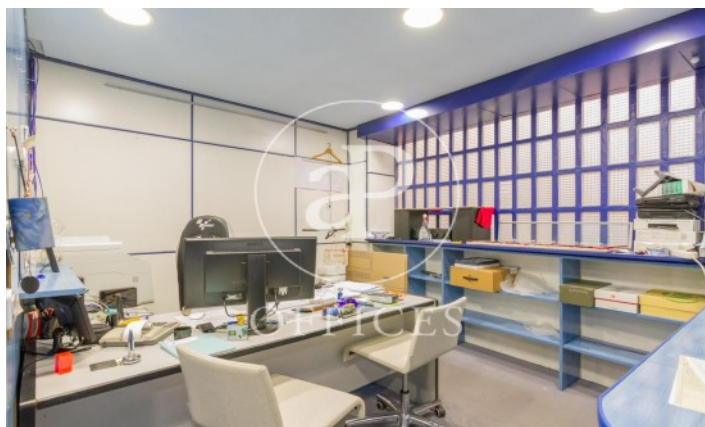


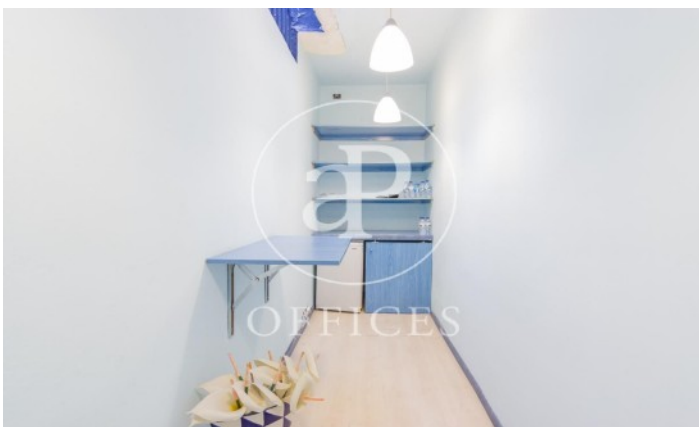
435,000 € | 240 m²

OPEN PLAN OFFICE WITH PARKING IN PROSPERITY. Office at street level, with independent entrance. Office of 240m². Two offices joined together, one of them has partitioned distribution with two toilets, kitchen office, wardrobes and false ceiling. The other office is open plan, ideal for storage area and parking area for two cars. Both offices have led lights and A/C hot and cold. The building is very well located, close to many shops and restaurants and Berlin Park, with good public transport location, bus lines 45,52,120,16,29 nearest metro station Metro Concha Espina. Can you imagine working here?









The information about any property is not binding to any offer or contract. Any verbal or written declaration made by aProperties with regards to the value or condition of the property should not be considered accurate or factual. The pictures make reference to some parts of the property at the times that they were taken. The areas, dimensions and distances that are given are approximate and should be checked by the client. The images are computer generated and are just an approximate indication of the real appearance of the property; these may change at any time. The information with regards to the property may also change at any time.

Contact us today for more information or to arrange a viewing

Tel: 91 800 54 65

oficinasmad@aproproperties.es

www.aoficinas.es