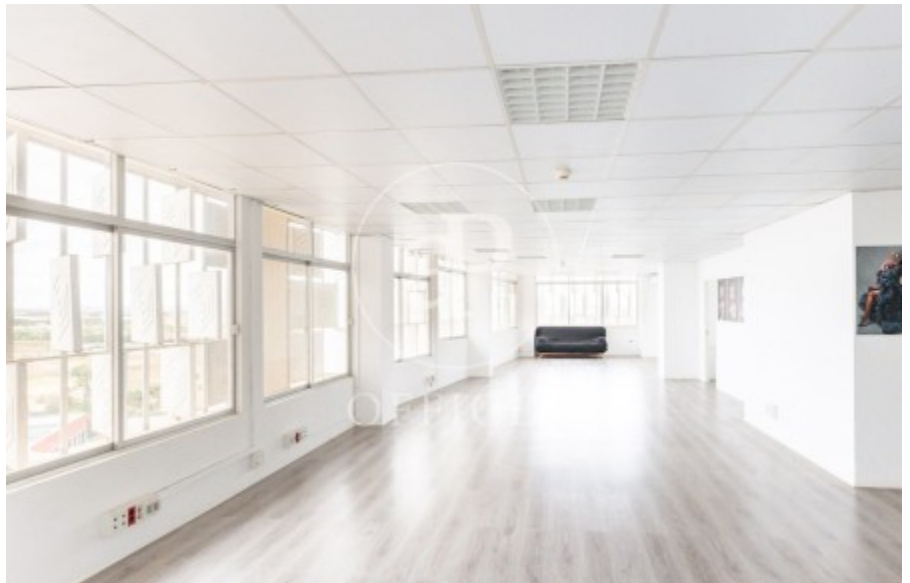


Offices for rent in the emblematic Torre Asima building

Ref. AOPM2305002

Palma de Mallorca / Monti-sión

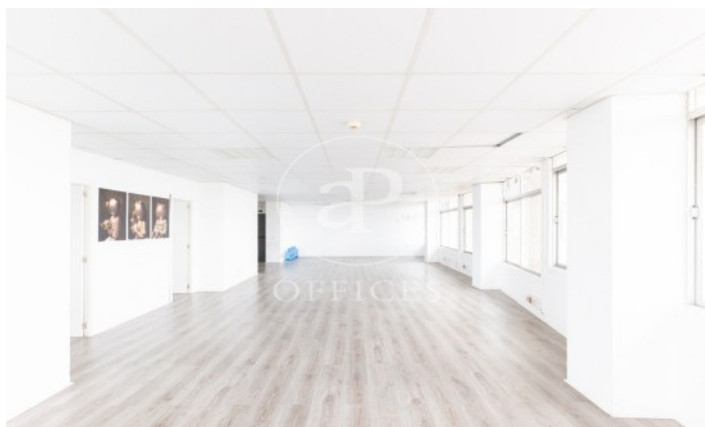
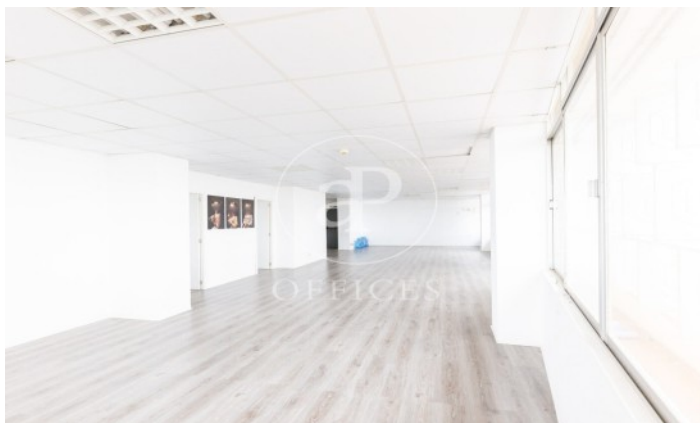
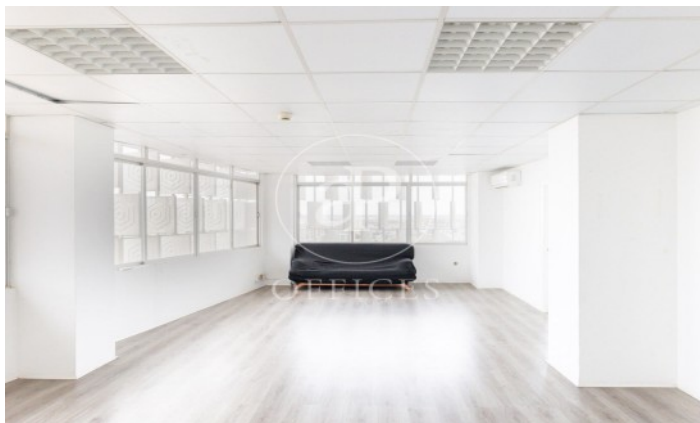
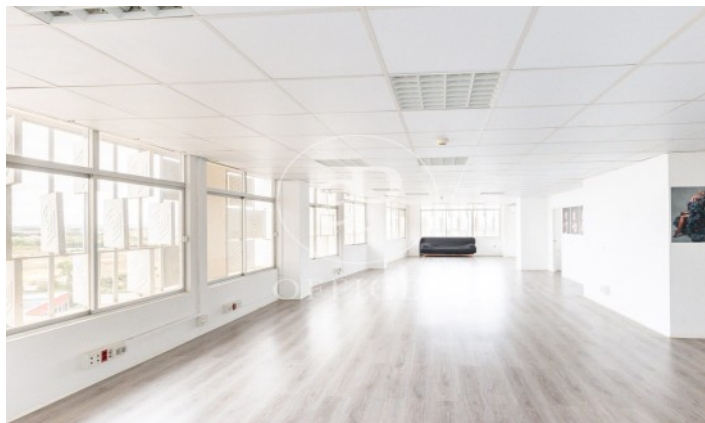
- ✓ Security
- ✓ Concierge
- ✓ A/C
- ✓ Heating

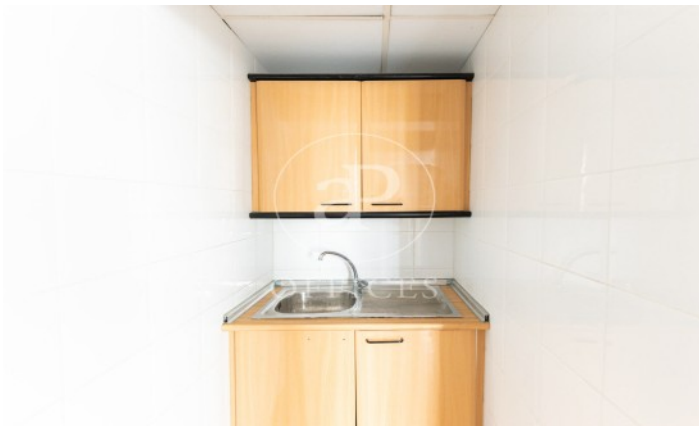
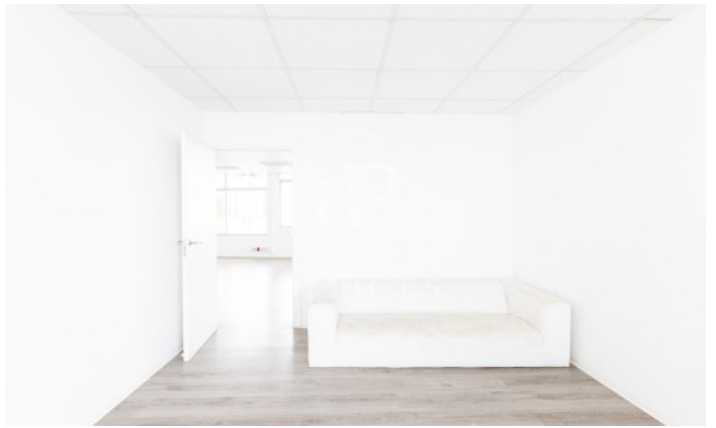


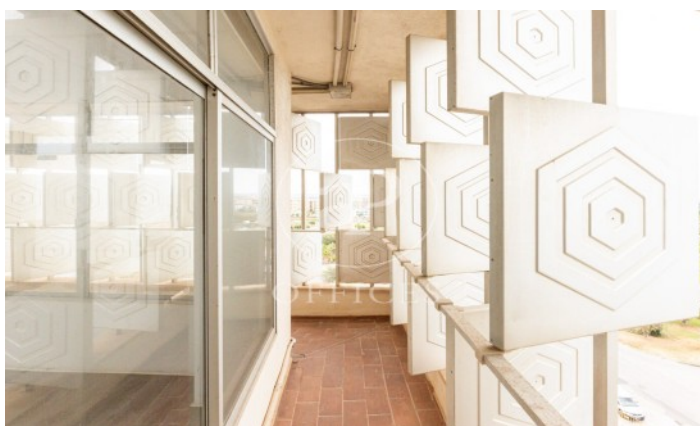
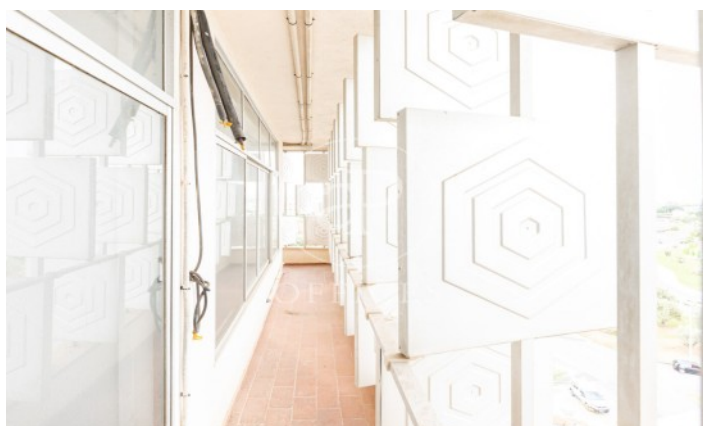
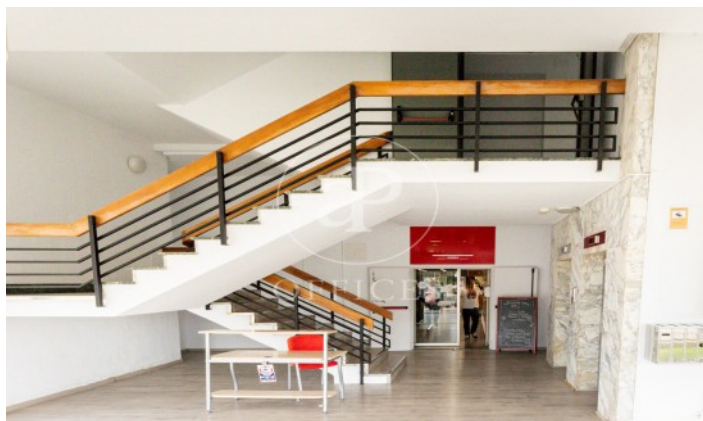
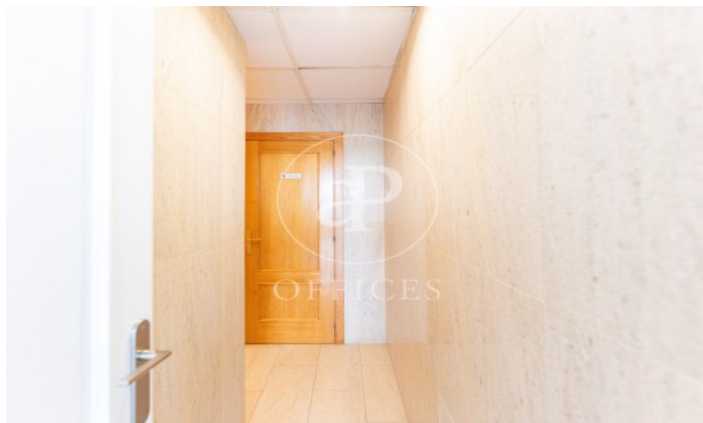
900 € | 170 m²

This is an office space located on a sixth floor in the Son Castello industrial estate, 5 minutes from the airport. The space has many possibilities of use. It is divided into 3 medium-sized offices and a large space with the possibility of separating it, a toilet and a reception area. All the space has exterior orientation, brand new parquet flooring, air conditioning system and central heating. Immediate availability. Call us for more details!









The information about any property is not binding to any offer or contract. Any verbal or written declaration made by aProperties with regards to the value or condition of the property should not be considered accurate or factual. The pictures make reference to some parts of the property at the times that they were taken. The areas, dimensions and distances that are given are approximate and should be checked by the client. The images are computer generated and are just an approximate indication of the real appearance of the property; these may change at any time. The information with regards to the property may also change at any time.

Contact us today for more information or to arrange a viewing

Tel:

www.aoficinas.es