

Office for rent in the industrial estate of Son Castello

Ref. AOPM2209001

Palma de Mallorca / Son Oliva

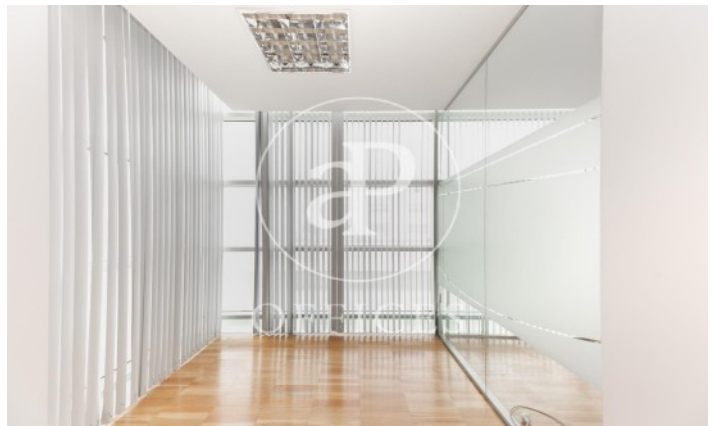
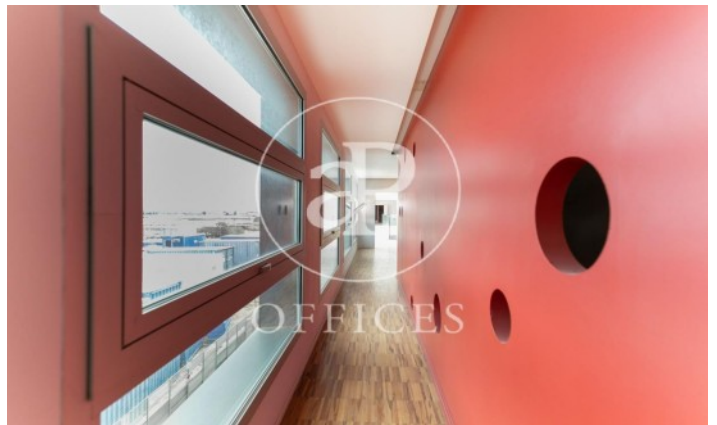
- ✓ A/C
- ✓ Heating
- ✓ Parking

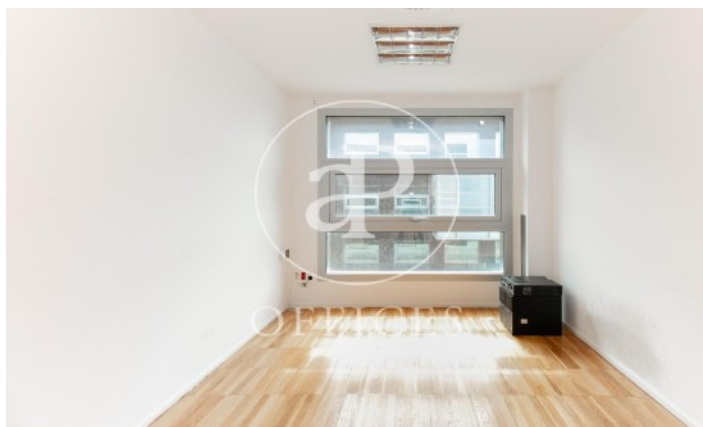


2,250 € | 250 m²

In the heart of the Son Castello industrial estate, a cluster of the decoration, construction and service industry. We have these modern offices of about 250 sqm in a stylish building. The space has an open plan area with windows to the outside and equipped with 6 towers of mains and voltage connectors. To the left are three glazed offices, two of which are large and can be used as meeting rooms and one is a small office for private use. The entire property has parquet flooring, white ceilings with lighting and air conditioning and central heating with independent controls per zone. Included in the rental price is a parking space with the possibility of renting up to five more parking spaces for an extra charge.









The information about any property is not binding to any offer or contract. Any verbal or written declaration made by aProperties with regards to the value or condition of the property should not be considered accurate or factual. The pictures make reference to some parts of the property at the times that they were taken. The areas, dimensions and distances that are given are approximate and should be checked by the client. The images are computer generated and are just an approximate indication of the real appearance of the property; these may change at any time. The information with regards to the property may also change at any time.

Contact us today for more information or to arrange a viewing

Tel:

www.aoficinas.es